



????????? Forgemind ArchiMedia / CC BY-NC-SA 2.0

Attribution-NonCommercial-ShareAlike 2.0 Generic

URL: <https://creativecommons.org/licenses/by-nc-sa/2.0/>



????????? Forgemind ArchiMedia / CC BY-NC-SA 2.0

Attribution-NonCommercial-ShareAlike 2.0 Generic

URL: <https://creativecommons.org/licenses/by-nc-sa/2.0/>



????????? Forgemind ArchiMedia / CC BY-NC-SA 2.0

Attribution-NonCommercial-ShareAlike 2.0 Generic

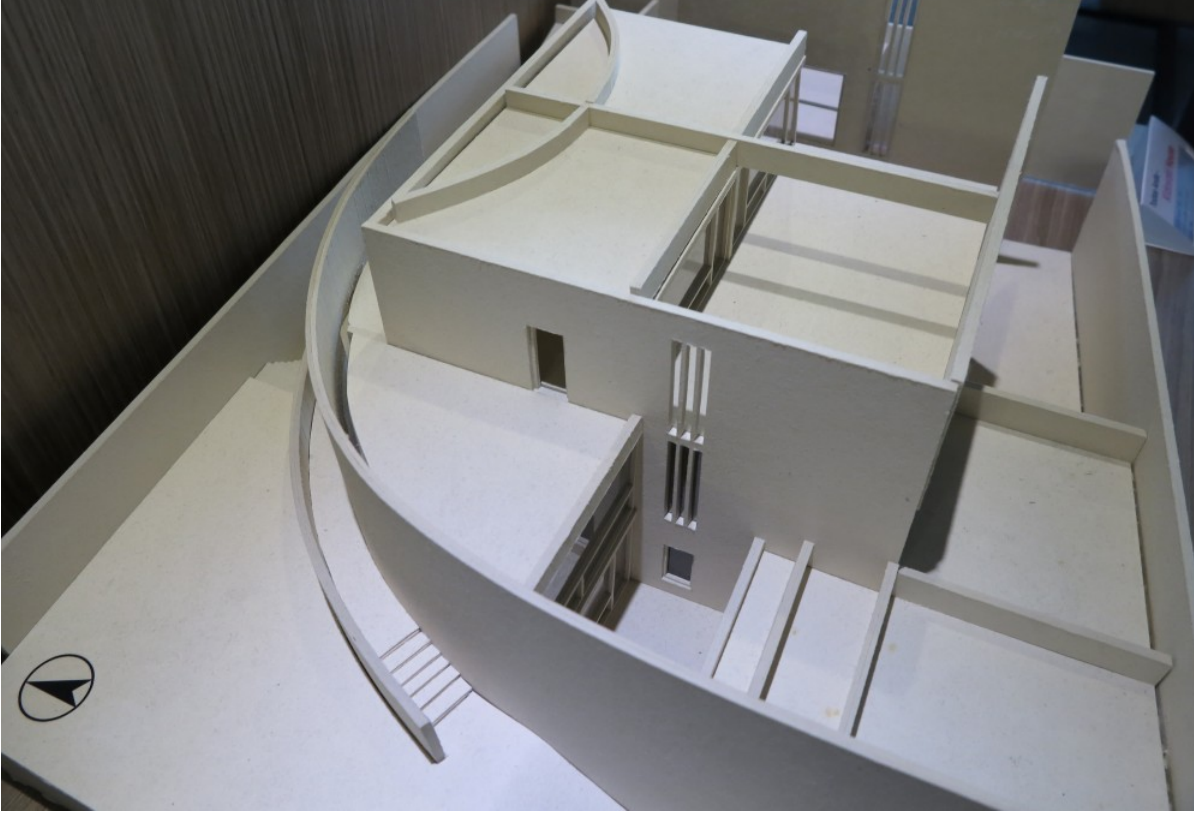
URL: <https://creativecommons.org/licenses/by-nc-sa/2.0/>



????????? Forgemind ArchiMedia / CC BY-NC-SA 2.0

Attribution-NonCommercial-ShareAlike 2.0 Generic

URL: <https://creativecommons.org/licenses/by-nc-sa/2.0/>



????????? Forgemind ArchiMedia / CC BY-NC-SA 2.0

Attribution-NonCommercial-ShareAlike 2.0 Generic

URL: <https://creativecommons.org/licenses/by-nc-sa/2.0/>

Autor/es:

Tadao Ando

Colaborador/es:

Localización:

Tokio , Distrito metropolitano de Tokio , Japón

Dirección:

2 Chome-2-8 Daita, Setagaya-ku, T?ky?-to 155-0033, Japón

Fecha:

1982 - 1986

Estado:

ok !

Visitable:

no

Construido:

sí