



Wiki05 / CC BY-SA 3.0
tribution-ShareAlike 3.0 Unported
[vecommons.org/licenses/by-sa/3.0/](https://commons.org/licenses/by-sa/3.0/)



Commercial-NoDerivs 2.0 Generic
[ommons.org/licenses/by-nc-nd/2.0/](https://creativecommons.org/licenses/by-nc-nd/2.0/)



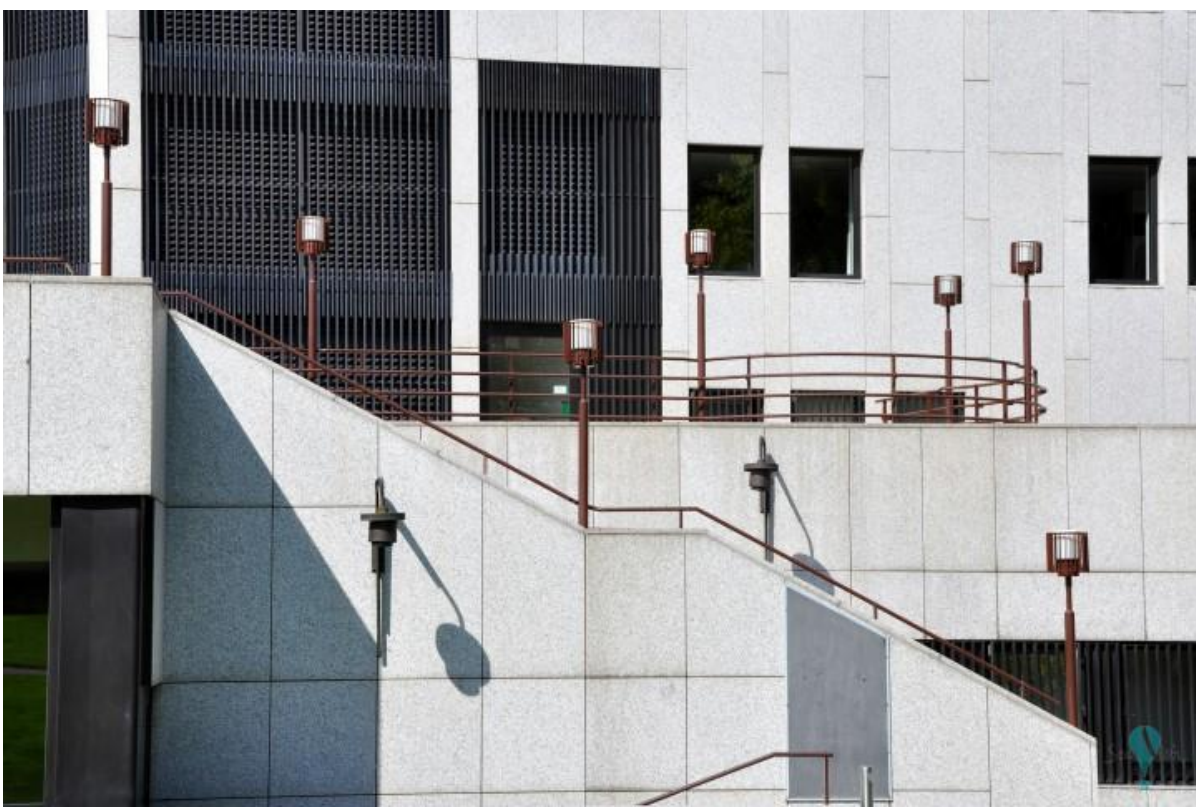
jaime.silva / CC BY-NC-ND 2.0
Commercial-NoDerivs 2.0 Generic
[ommons.org/licenses/by-nc-nd/2.0/](https://creativecommons.org/licenses/by-nc-nd/2.0/)



jaime.silva / CC BY-NC-ND 2.0
Commercial-NoDerivs 2.0 Generic
[commons.org/licenses/by-nc-nd/2.0/](https://creativecommons.org/licenses/by-nc-nd/2.0/)



jaime.silva / CC BY-NC-ND 2.0
Commercial-NoDerivs 2.0 Generic
[commons.org/licenses/by-nc-nd/2.0/](https://creativecommons.org/licenses/by-nc-nd/2.0/)



Commercial-NoDerivs 2.0 Generic
[ommons.org/licenses/by-nc-nd/2.0/](https://creativecommons.org/licenses/by-nc-nd/2.0/)



jaime.silva / CC BY-NC-ND 2.0
Commercial-NoDerivs 2.0 Generic
[ommons.org/licenses/by-nc-nd/2.0/](https://creativecommons.org/licenses/by-nc-nd/2.0/)



jaime.silva / CC BY-NC-ND 2.0
Commercial-NoDerivs 2.0 Generic
[mmons.org/licenses/by-nc-nd/2.0/](https://creativecommons.org/licenses/by-nc-nd/2.0/)



jaime.silva / CC BY-NC-ND 2.0
Commercial-NoDerivs 2.0 Generic
[mmons.org/licenses/by-nc-nd/2.0/](https://creativecommons.org/licenses/by-nc-nd/2.0/)

jaime.silva / CC BY-NC-ND 2.0

Autor/es:

Alvar Aalto

Colaborador/es:

Localización:

Essen , Renania del Norte-Westfalia , Alemania

Dirección:

Opernplatz 10, 45128 Essen

Fecha:

1959 - 1988

Estado:

ok 

Visitable:

sí

Construido:

sí

Descripción

Desde 1970 a 1976 su colaborador alemán fue Bauasessor Horst Loy; El teatro de la Opera finalmente fue construido entre 1981 y 1988 bajo la supervisión de Harald Deilmann.

Página web:

<http://www.Aalto-musiktheater.de/>